

Laminate
from TAK



Project Type
5+1
CORNER TERRACE

Floor Area
3,300SQFT

Statement of Style

CLEAN LINES, QUIET SOPHISTICATION AND THE USE OF LIGHTS,
TEXTURES AND COLOURS, MAKE THIS A HOME THAT'S STYLISHLY SUBDUED.

An understated design can be just as powerful as something that's loud and bold. This terrace house at Tai Keng Gardens, for example, eschews overpowering design elements and instead, embraces a cleaner aesthetic. At 3,300sqft, the spacious home is large and inviting, with cool polished surfaces and sleek, clean lines.

In the living room, cool marble flooring runs underfoot. This is complemented by the wall length storage system, with its raw,

cement finish. The length of the wall stretches from one end of the house to the other, visually elongating the space and creating a visual flow.

LOOKING OUT

With such a strong visual element in the living room, the interior design team from ID Emboss did not want to include a feature wall. Instead, they decided to incorporate the ceiling-high, wall-to-wall windows into the design. With such an expansive view that lends

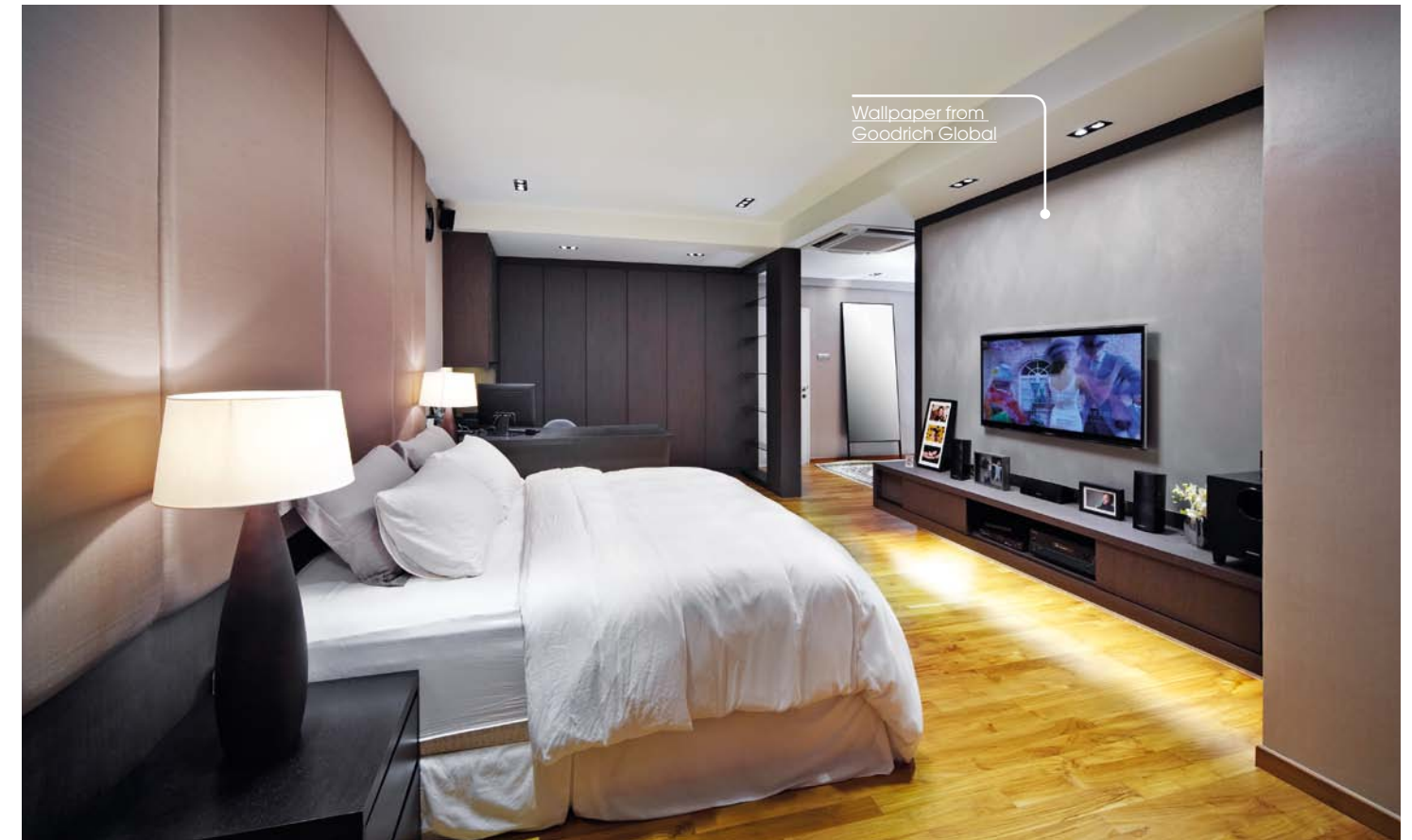


Kitchen top from Ego Marble



to the home's appeal, the designers realised that there was no need to forcibly integrate a feature wall or standout focal point in this room. The sofa set faces these windows, and looks out to the garden outdoors.

Just next to the living room are the dining room and dry kitchen area, separated only by a single step up. This difference in height is a subtle way of demarcating the two spaces without relying on solid boundaries like walls or doors. The kitchen – which also serves as a bar counter for entertaining guests – is anchored by a marble island counter against a backdrop of solid wood cabinets.



Wallpaper from Goodrich Global

GENTLE DESIGN

For the master bedroom, the designers decided to keep things simple and understated. A neutral colour palette takes precedence here, creating the perfect environment for unwinding after a long day at work. Instead of a regular headboard, the designers covered the entire wall above the bed with padded panels, essentially transforming the entire wall into one large headboard.

On the opposite wall, a television screen is mounted on a finely textured wall in a slightly industrial shade of slate. This soothing contrast of colour gives the room its soothing vibe, especially when paired with the lavish wooden floors.

The bathrooms in this house are just as impressive, each with its own style and look. Using a combination of luxurious marble walls and glossy floor tiles, the designers managed to achieve a sense of understated luxury in each space. And with the added effects from the alcove lighting, the bathrooms appear clean and airy. ■



Vanity top from Ego Marble

“The bathrooms in this house are just as impressive, each with its own style and look.”

IDEMBOSS

IDEMBOSS PTE LTD

662 North Bridge Road
Singapore 188798

TEL (65) 6295 7096

FAX (65) 6295 7097

EMAIL sales@kohong.com

www.idemboss.com