

Project type  
CONDOMINIUM

Floor area  
958 SQFT

TEXT: ROSSARA JAMIL

# Warm Thoughts

ID EMBOSS TAKES A CONSIDERED APPROACH TOWARDS THIS APARTMENT FOR A HOMELY AND WELCOMING FEEL.

Interior design firm ID Emboss is no stranger to creating simple interiors imbued with just the right amount of warmth. And it is this adeptness with interiors that the owners of this condominium apartment were keen to tap into. While they knew what they wanted, they relied on ID Emboss to cohesively put the look together.

For one, the owners wanted seamless transitions from one area of the home to another. Functionality and practicality were equally important to the couple too. Aside from that, the couple also wanted their existing Bang & Olufsen sound system and 60-inch LED TV to fit nicely with the feature wall in their living area.

## GET SLEEK

The designers adhered to the requirements, and completed an apartment that sports a contemporary interior with crisp lines. Neutral hues fill the space, with black accents spread throughout the home. The feature wall barely touches the back wall, creating a sliver of space for cove lighting that throws lights towards the ceiling. This is in line with the homeowners' brief, which outlines the importance of lighting throughout the home. Another example is the drop ceiling that runs down the centre of the living room – it houses cove lights for gentle illumination.

Also in the living room are mirror panels that flank the sofa, creating symmetry in the



Laminate  
from Lamitak

Sound system  
from Bang &  
Olufsen

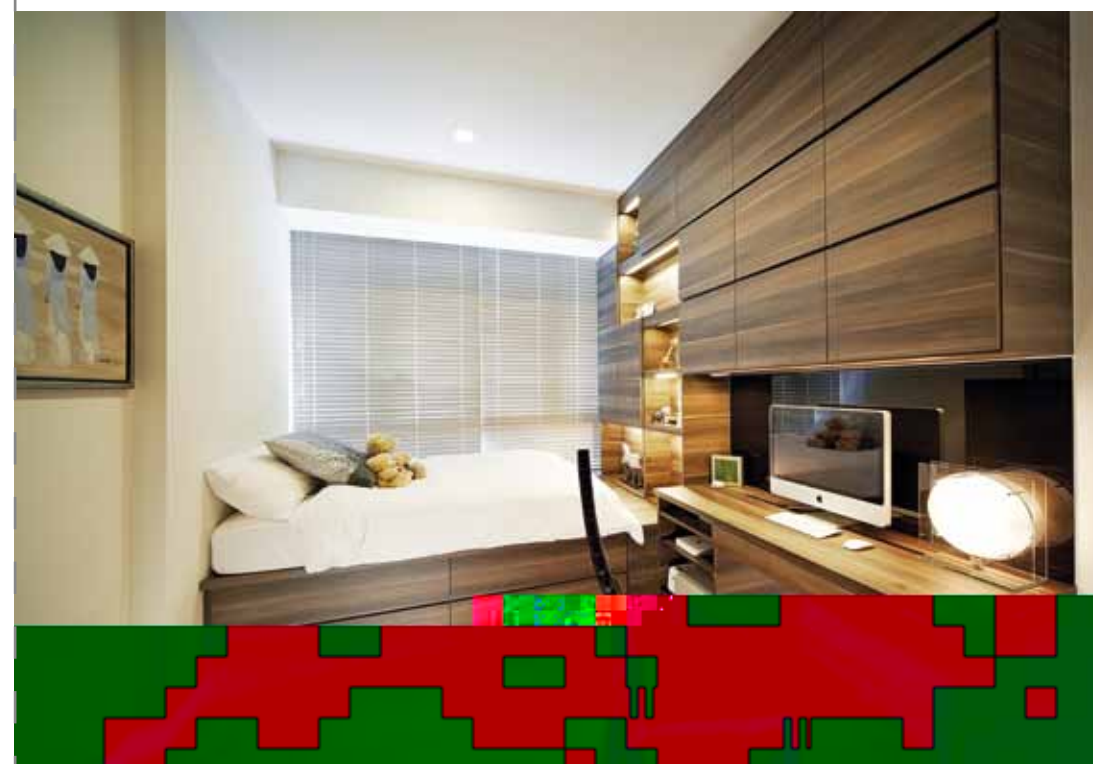
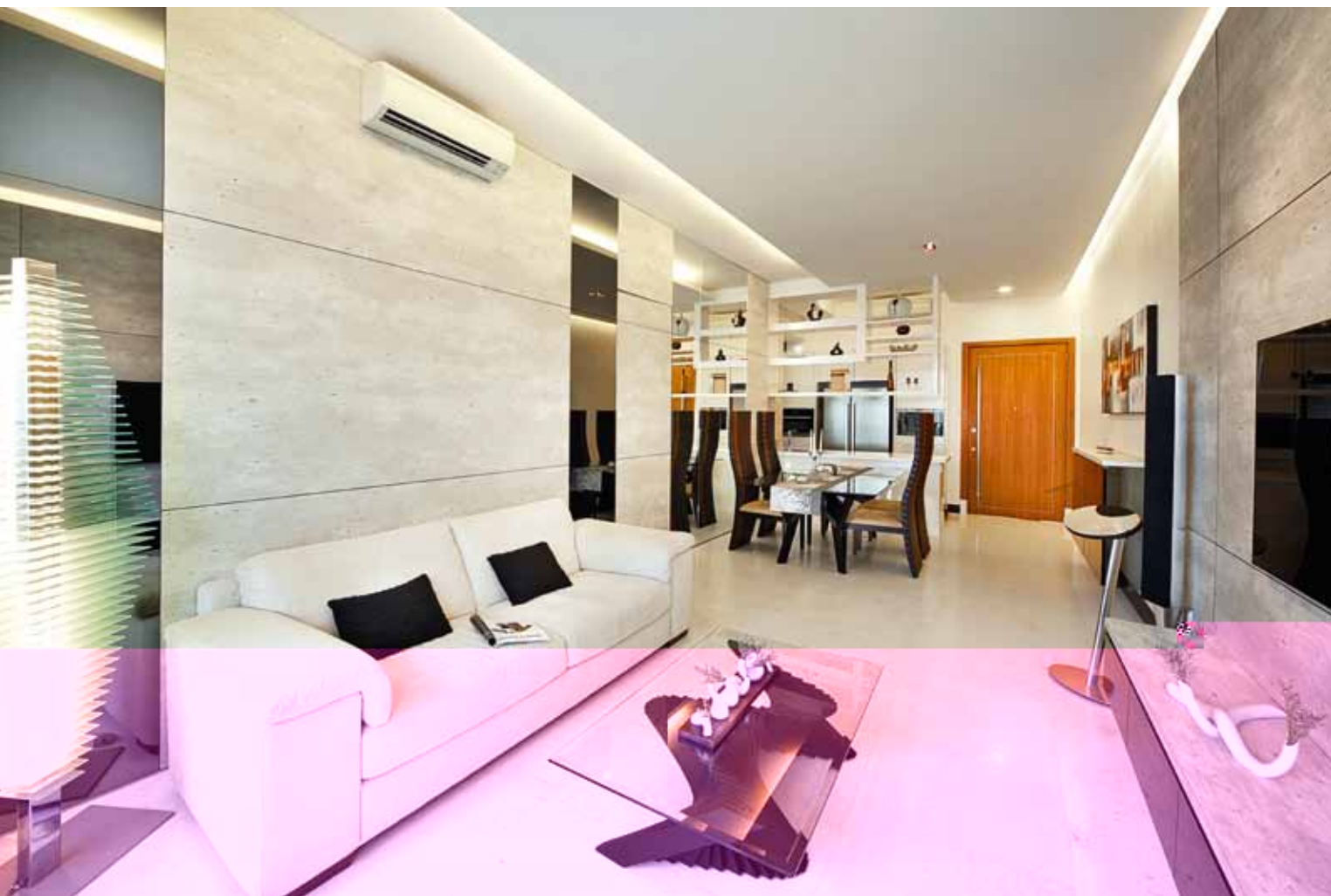
space. Full-height windows let in plenty of light to accentuate the subtle finishes. These mirrors actually conceal the entrance to the bedroom. When closed, the mirrored doors appear to be a part of the wall design, adding

to the clean, streamlined look of the living and dining rooms.

#### REST AREAS

The mood turns decidedly warmer in the bedrooms, but the design team created a nice balance of dark and light finishes. Wallcoverings were chosen for their light colours and tone-on-tone patterns. Wood finishes were used to blend with the existing built-in wardrobe and parquet flooring. In the master bedroom, ID Emboss built a slim feature wall to mount the television set on. Another bedroom is fronted with plenty of storage cabinets and shelves to house books and other belongings.

“The designers adhered to the requirements, and completed an apartment that sports a contemporary interior with crisp lines.”



Working around the existing furniture, just like the existing dry and wet kitchen and the large dining set, was a challenge for the design team. But the team solved these spatial issues with finesse. The owners had also left it to the team to choose the right fittings and soft furnishings, resulting in a space where details blend perfectly. ■



ID EMBOSS PTE LTD

662 North Bridge Road  
Singapore 188798

TEL (65) 6295 7096

FAX (65) 6295 7097

EMAIL sales@kohong.com

www.idemboss.com