

SPECIAL ADVERTISING FEATURE

# A Mixed Blend

*ID Emboss combines the best of three interior themes to fashion a work of art.*

 By Michelle Yee



*Colours, textures and lighting are melded seamlessly in this room.*

**Combining distinctly different** interior design themes is a path that designers usually tread with caution. The result can vary from one extreme to another, but with this project, interior design firm ID Emboss has proven that matching three different interior design themes is not only possible, but also packs a punch.

Here in this semi-detached house located along Eastwood Road, the design team from ID Emboss demonstrates this very insight in their intrepid use of textures, materials and striking pieces to create an appealing visual effect.

Home to a couple and their young children, this spacious house offered plenty of room for interior design ideas to be implemented. It is set over three floors, with spacious bedrooms on the second and third floors, as well as several family areas throughout.

The entrance to the house, by the way, is via a porch, which has been furnished simply with synthetic wicker outdoor furniture and clad with timber decking.

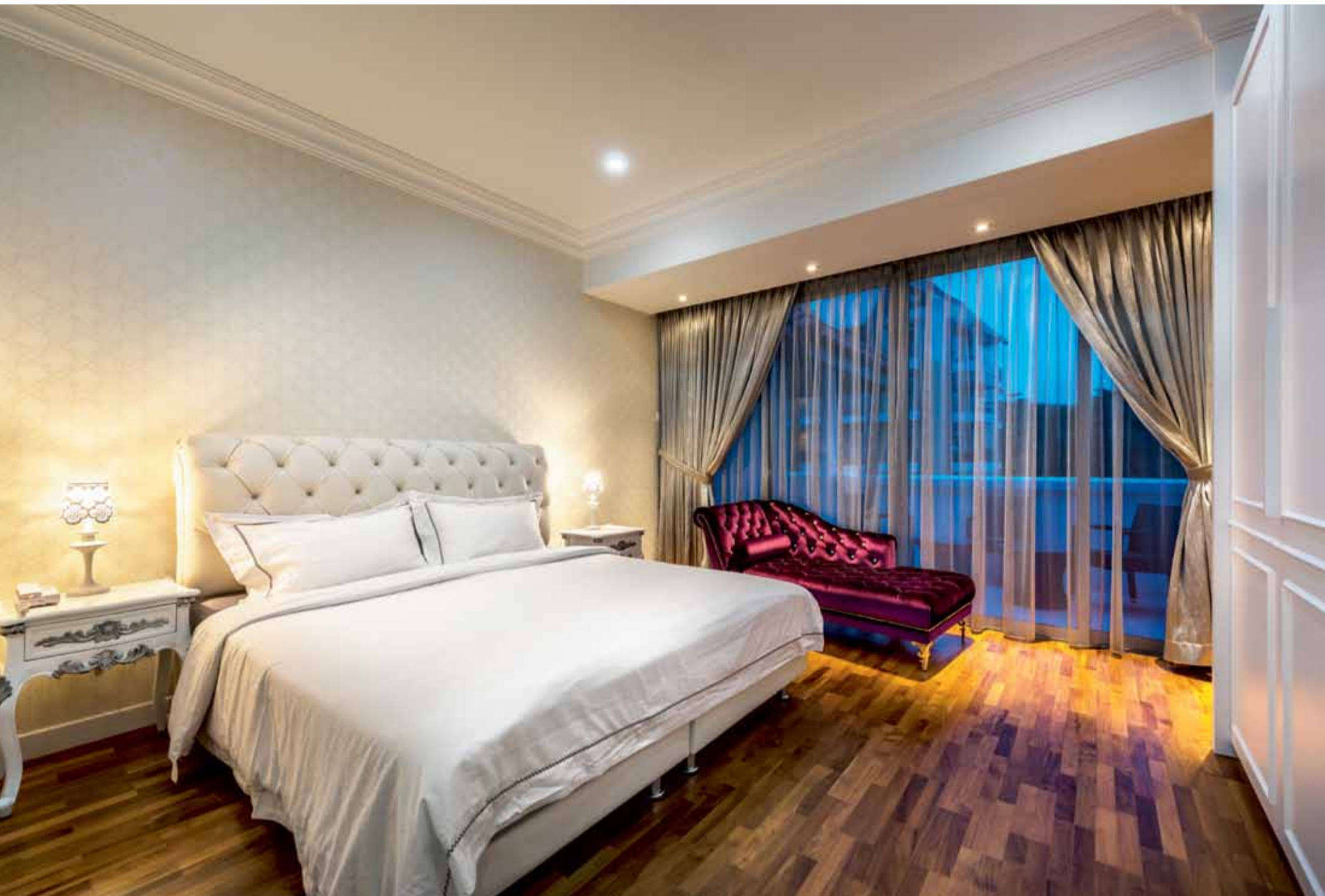
## LITTLE DETAILS

Towards the end of the house, the existing kitchen layout separates the wet and dry kitchen, and even has a long bar counter that doubles as a dining area. The design team retained the basic layout of the space, and then added plenty of overhead cabinets for maximum storage.

In the dining area, the choice of furniture keeps the space visually light. The only striking detail here is none other than the luxurious chandelier, which acts as a surprising finishing touch.

*The kitchen layout separates the wet and dry kitchen, and even features a long bar counter that doubles as a dining area.*





*The master bedroom has been designed as an elegant space, with wallpaper in classical patterns framing the bed.*

### STAR QUALITY

While colours, textures and lighting are key in the rest of the home, it is in the entertainment room that these are fully embraced. Lighting, bold furnishing and a brave juxtaposition of wallpaper patterns are melded together. The design team created a cosy setting with a variety of soft textures. On one side of the wall, there is a row of cabinets which have been installed to store the homeowner's extensive collection of music CDs that have been amassed over the years. In this room, the couple can not only indulge in their passion for music, but also get together with the rest of the family for a good session of bonding.

Further up, the design team's mesh of modern styles and classic designs continue into the bedrooms. Warmer hues take over the spaces, thanks to a heavier use of wood veneer finishes. The master bedroom itself has been designed as an elegant space, with wallpaper in classical patterns framing the bed.

Additional design elements contribute to the overall design philosophy, ranging from the panels on the TV feature wall, to the printed wallpaper, and even the spray-painted detailing on the walls and furniture.

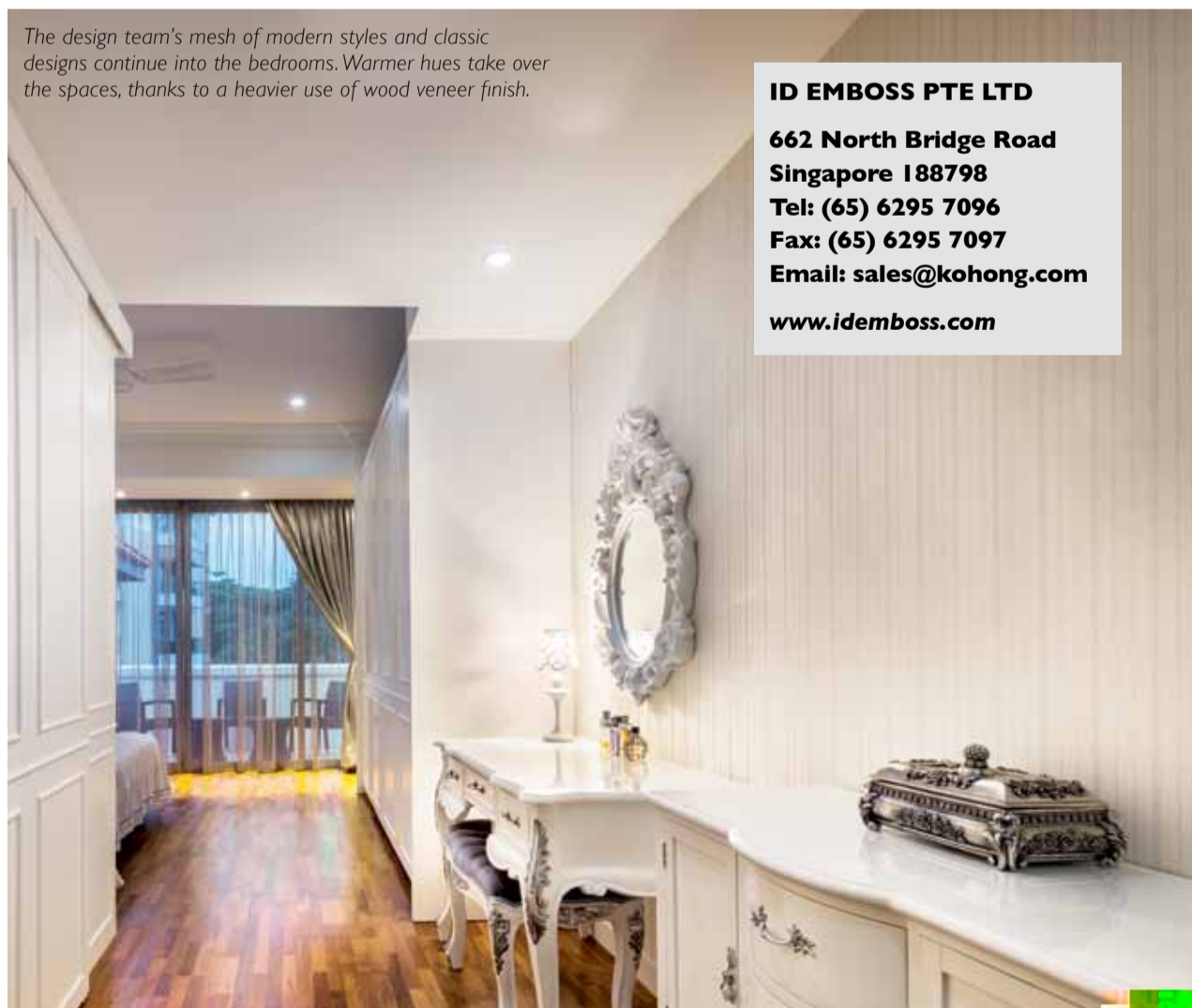
"The whole room has a softer feel that is relaxing to the eyes. This stylishly sumptuous ambience is achieved through the use of plush furnishings and polished finishes, such as the upholstered lounge chair, ambient lighting, and top-of-the-line beddings you see here, which instantly raise the luxe factor in this bedroom," the design team shared.

### A FAIR DISTINCTION

The children's bedrooms, on the other hand, have been given a different spin to reflect their youthful preferences. Here, a dominant pink and white colour scheme rules the spaces, with pretty striped wallpaper covering the walls.

When asked what makes this home unique, the design team shared quite confidently: "A lot of homes these days look the same, and it's all quite boring. This home has a unique design that is suitable for the family that stays here. That is what makes it different."

*The design team's mesh of modern styles and classic designs continue into the bedrooms. Warmer hues take over the spaces, thanks to a heavier use of wood veneer finish.*



**ID EMBOSS PTE LTD**  
**662 North Bridge Road**  
**Singapore 188798**  
**Tel: (65) 6295 7096**  
**Fax: (65) 6295 7097**  
**Email: sales@kohong.com**  
**www.idemboss.com**